

# Test Switchover Replication

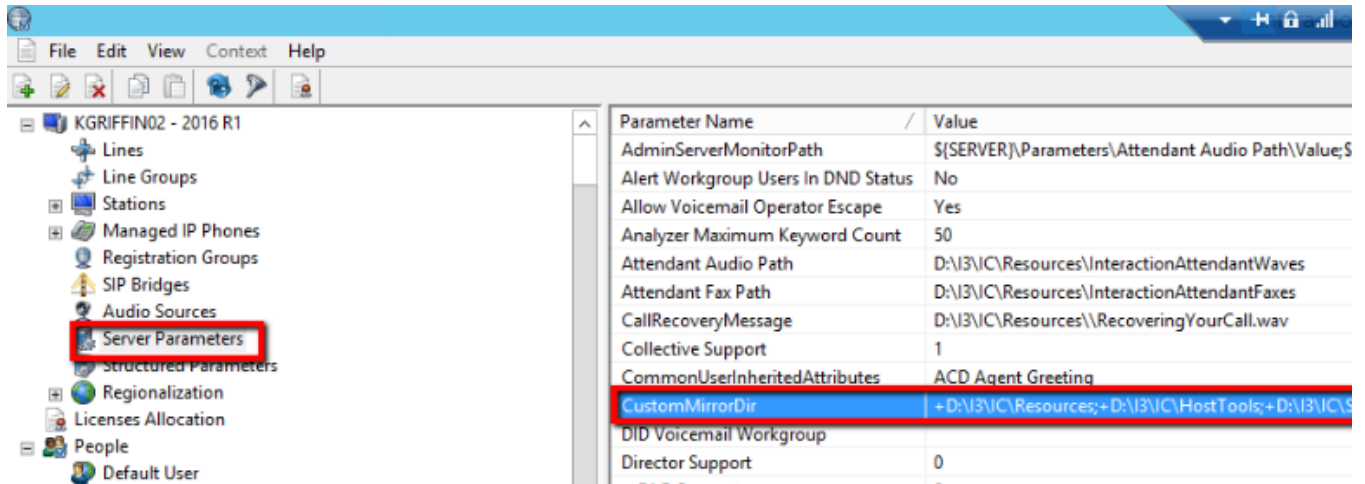
This document explains how to verify if switchover file replication is occurring as it should and within a timely manner. For more information about switchover features and options, see the related documentation:

[Automated Switchover System Technical Reference](#)

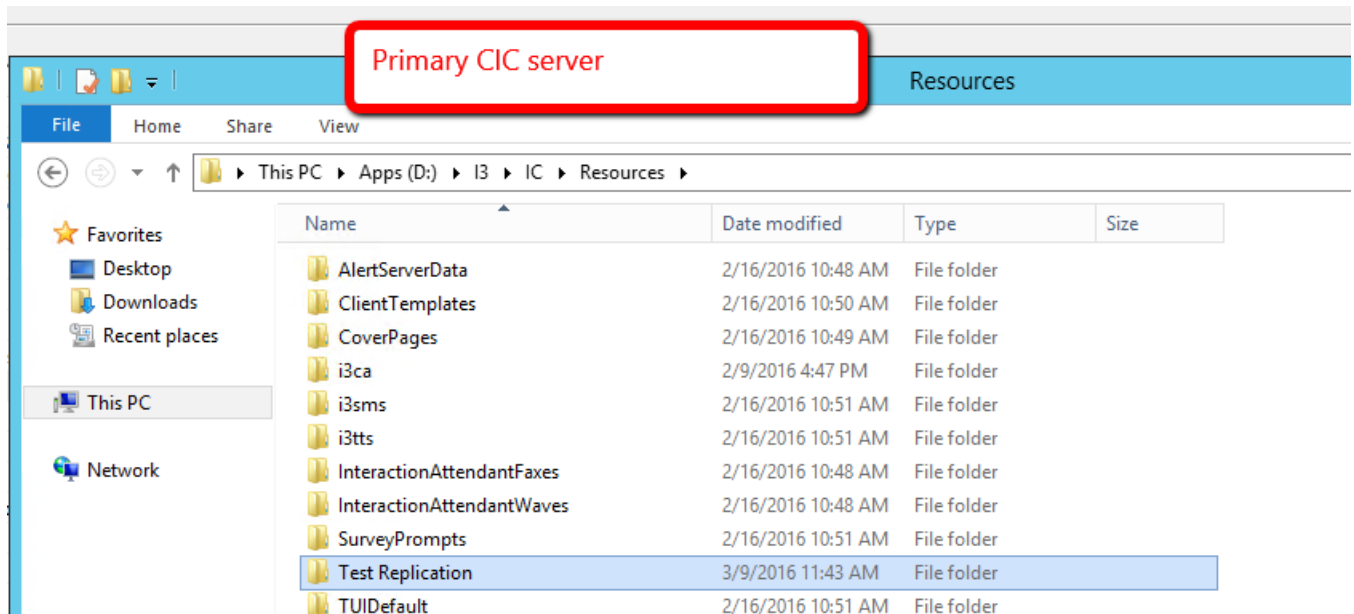
Interaction Administrator: [Automated Switchover System Server Parameters](#)

## Verify Mirror Directory Locations

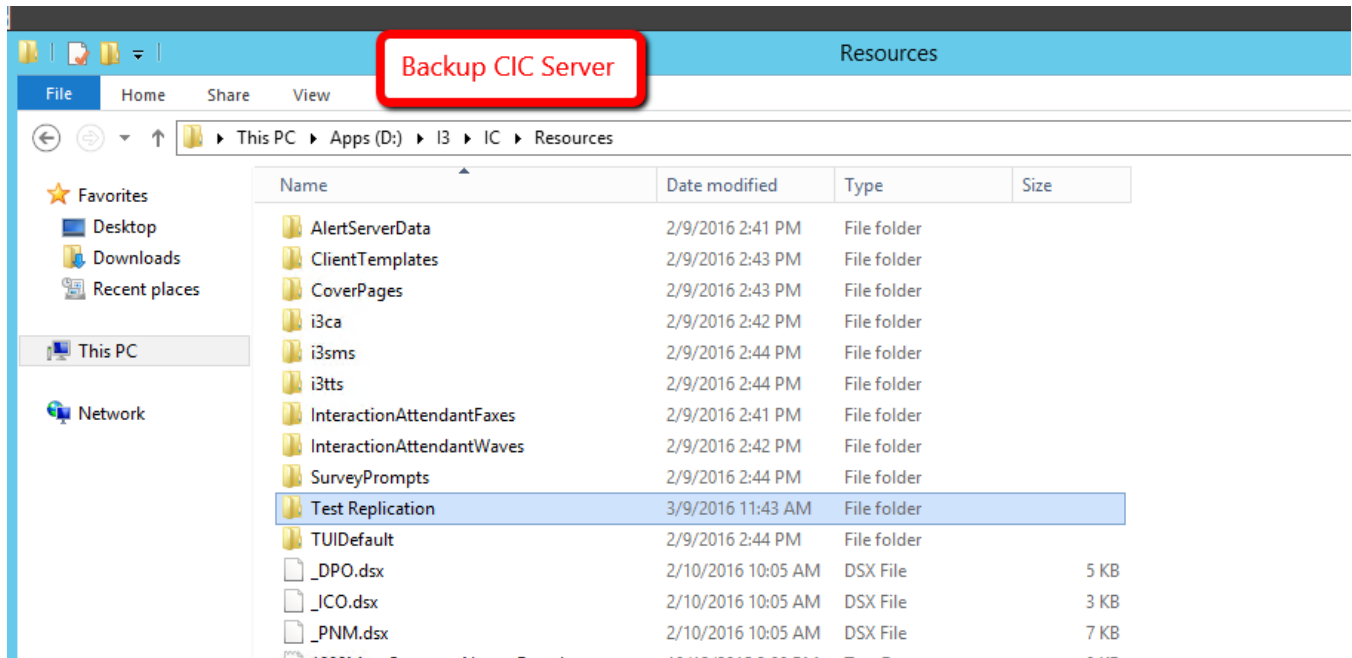
1. Open Interaction Administrator on the active primary server.
2. Open the Server Parameters container.
3. Select the CustomMirrorDir server parameter and note the locations that are listed.



4. Use Windows Explorer to open one of the directory locations listed in the CustomMirrorDir parameter.
5. From that folder, create a subfolder called "Test Replication".



- Open the backup CIC server and use Windows Explorer to verify that the "Test Replication" folder appears in the same location as it appears on the primary CIC server.



- To continue testing, go back to the primary CIC server and add some large files to the "Test Replication" folder that you created earlier.
- Go back to the backup server and verify that the files you added are replicated to the backup server.