

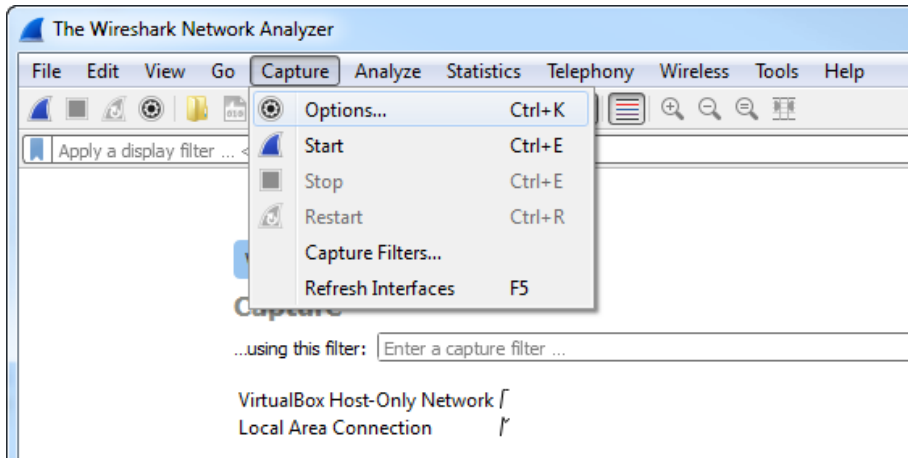
# Use Wireshark capture on a client workstation

This article explains how to use Wireshark to capture network traffic on a client workstation.

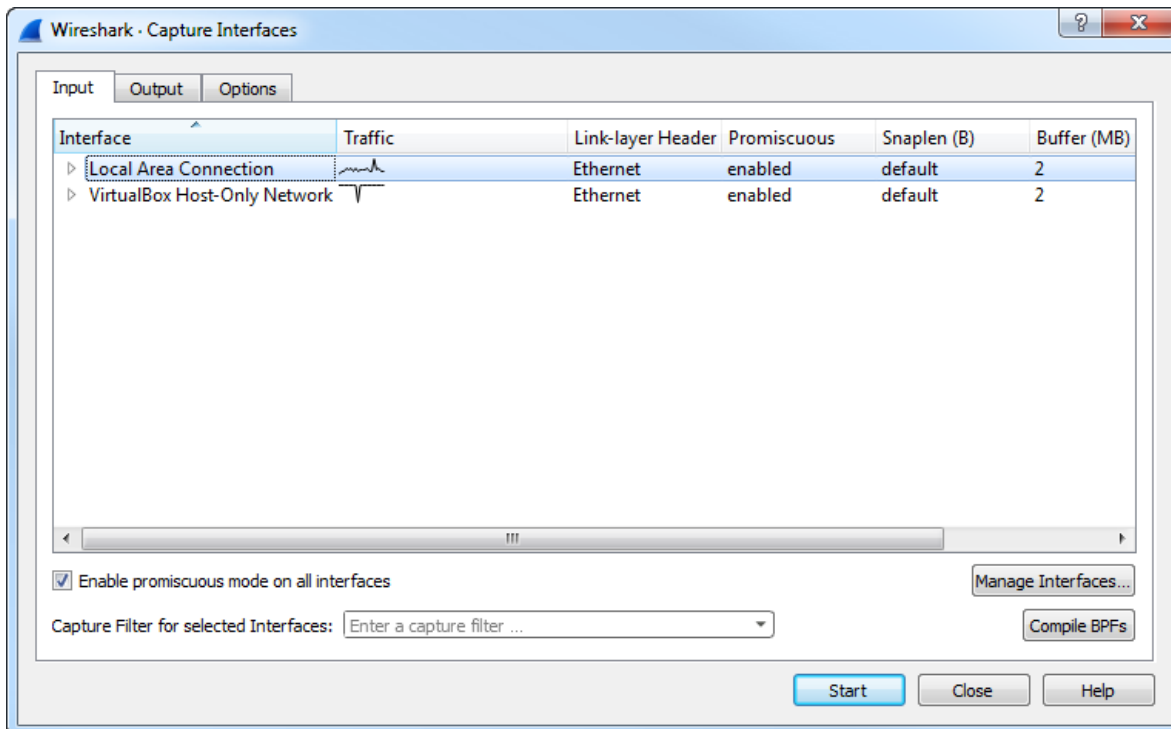
Wireshark is a free and open source packet analyzer used for network troubleshooting and analysis. You can download it from [www.wireshark.org](http://www.wireshark.org) and install it locally on your workstation.

To capture packets on a workstation with Wireshark:

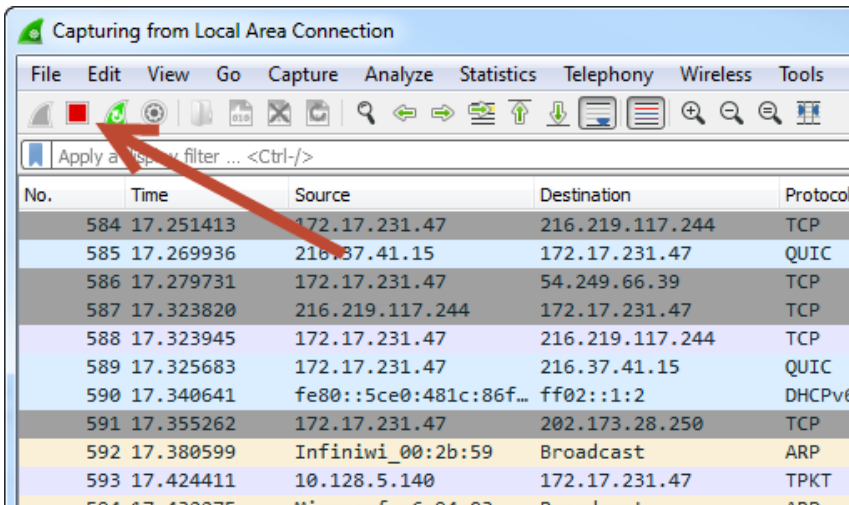
1. Start Wireshark and select the **Capture > Options** menus.



2. On the Input tab, select the network interface to capture the traffic on, and then select **Start**.



3. Wireshark immediately starts capturing packets. When the test is complete, stop capturing by clicking the red stop button on the toolbar.



4. Save the captured packets by selecting the **File > Save As...** menus and naming the file.

