



PureConnect®

2021 R1

Generated:

12-February-2021

Content last updated:

19-May-2020

See [Change Log](#) for summary of changes.



CIC Regionalization and Dial Plan

Technical Reference

Abstract

This technical reference outlines the concept of regionalization, which consists of defining multiple locations where CIC users have SIP devices. Each location defines some endpoints (lines, stations, and/or servers), and the codecs that enable the endpoints at the locations to communicate. These locations, then, normally tie in to the regionalized dial plan configuration, which enables CIC administrators to filter and define local dial plan entries for each location while retaining the most economical dialing paths between all sites.

For the latest version of this document, see the PureConnect Documentation Library at: <http://help.genesys.com/pureconnect>.

For copyright and trademark information, see

https://help.genesys.com/pureconnect/desktop/copyright_and_trademark_information.htm.

Table of Contents

Table of Contents	2
Who should read this document?	4
What are the basic concepts?	5
Locations	5
Default location	5
Endpoints	5
Regional dialing	5
Server endpoints	6
Regional dial plan	6
Old dial plan	6
Filters	6
Codec selection maps	6
Required checklist	6
No remote PSTN connections?	7
Differences between the old dial plan and the regional dial plan	9
User interface changes	9
Single-table dial plan	9
Number lists	10
Regionalization and location filters	10
Simulate calls	11
Classification categories	11
Additional classifications	12
Advanced features	13
User data	13
Quoted and escaped string literals	13
Performance improvements	13
Understanding Locations	15
The most common use for locations	15
Locations for incoming calls	15
Representing locations	15
Prerequisites for creating locations	16
Creating locations	17
Configuring locations	20
Using the Location Map	23
Understand and update the Regional Dial Plan	26
Understand the dial plan settings	26
Default dial plan entries	26
Rules for standardized numbers	27
Wildcard characters	28
Special characters	28
Ordinal numbers	28
Dial groups	28
Location filters	29
Understand the dial plan process	29
Update the dial plan entries	30
New area codes	30
New exchanges	30
Emergency dialing	31
Filtering the dial plan	31
Ordering the dial plan entries	31
Importing and exporting the dial plan	31
Update the local 911 entry	32
Create a new dial plan entry	32
Create a new dial group entry	34
Convert to the regional dial plan	35
Remote station connection calls	35
Forward and follow-me region selection	35
Server parameter for internal, regional calls	36
What is a dial plan?	37
What is regionalization?	38
Change Log	39

Who should read this document?

This document is intended for CIC administrators and those who want to:

- Understand the concepts of regionalization, locations, and the CIC dial plan configuration.
- See a summary of the differences between the newer, second generation, single-table, regional dial plan and the older, original dual-table dial plan.
- Learn how to configure SIP lines and stations to use local resources and take advantage of a centralized dial plan.

What are the basic concepts?

The CIC regionalization features are based on the following concepts and Interaction Administrator configuration options.

Locations

A location, usually associated with a physical place, is really a virtual grouping of endpoints (devices) that share a common dial plan and codecs. Locations are defined in Interaction Administrator. A location defines a set of physical endpoints (SIP endpoints and lines) that share common dial plan characteristics. A location also specifies the codec map between the endpoints (i.e., SIP stations, SIP lines, and the CIC server). It may further define a home-site CIC server, a peer-site CIC server, or an Interaction Media Server for processing voice (RTP) traffic instead of the CIC server.

Common examples of a location include:

- A small satellite office (in the same town or another city or state) with all SIP phones serviced by the CIC server at headquarters
- A group of remote employees that use SIP phones over the corporate VPN
- A remote peer-site office with its own CIC server in a multi-site configuration
- A gateway in an obsolete (closed) office with no phones, but used to redirect incoming phone calls to an old number.



Default location

The Default Location is used in all cases where no location is specified (e.g., for all SIP devices that are not assigned to any location). This is where you specify the codec mappings for all devices in sites that have SIP lines and stations but no Locations defined. That means even sites that use the old dial plan may need to modify the Default Location, if they are also using SIP devices with the CIC server. The <Default Location> entry is created via a new or upgrade installation, and it includes one codec mapping to itself to enable some SIP functionality automatically.

Endpoints

An endpoint is a device that can receive audio. This can be a SIP Line, SIP Station, an CIC server, or an Interaction Media Server. For example, a dozen SIP stations that are in a different area code than the CIC server might comprise a list of endpoints.

Regional dialing

In larger infrastructures, Customer Interaction Center must use seven-digit, ten-digit, or sometimes longer user and station extensions for PSTN dialing and globally unique stations. Regional Dialing allows users to dial other users within a location using shorter, more convenient extensions. The number of digits to use for the shorter extensions is specified as the Significant Extension Digits. For example, if Significant Extension Digits is set to **3**, users can dial each other using the last three digits of their extensions.

For more information, see [Location Configuration](#) in *Interaction Administrator Help*.

Server endpoints

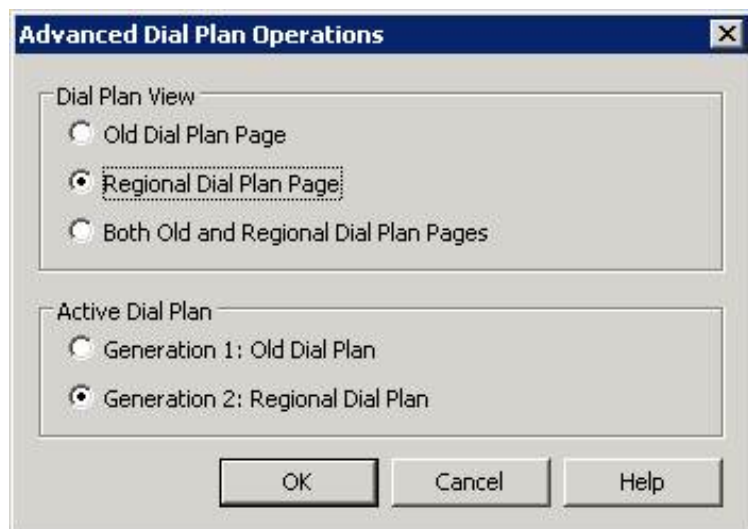
This option appears only if you have a SIP Media Server license. It allows you to specify information about your SIP Media Server, and to map the server to specific locations.

Regional dial plan

Also referred to as a *Generation 2* dial plan, a regional dial plan is one that uses the single-table dial plan and that incorporates one or more locations. By default, new CIC installations use this dial plan and assume a single CIC server with all lines and stations in one dial plan location, indicated by the filter group **<All>**. For a summary of the differences between the old dial plan and the newer regional dial plan, see [Differences between the old dial plan and the regional dial plan](#).

Old dial plan

Existing CIC installations that upgrade will continue to use the generation 1 dial plan (or old dial plan) until an administrator manually migrates the original dial plan into a regional dial plan. Using the **Advanced Dial Plan Operations** dialog box, you can specify which dial plan is visible in Interaction Administrator, and which one is active. Only one dial plan can be active at a time, but you can modify and save the inactive dial plan without interfering with the active dial plan.



Filters

A filter is a specific view into the overall dial plan and enables you to see only the dial plan entries for a particular location. All entries not relevant to that location are filtered out of that view. On the **Regional Dial Plan** page, you can filter the display to show only the dial plan entries for the selected location(s).

Codec selection maps

Codec selection maps are used to define the allowed communications between any two locations, or communication within a location. The map must exist and be accurately configured for two locations to communicate with each other.

Required checklist

Configuring locations by themselves in Interaction Administrator is not difficult, but location entries alone may be ineffective, depending on your implementation. You must have a clear understanding of the use and application of CIC locations, the gateways, networks and system software that connect locations, and you must know how to customize the regional dial plan in order to see the cost savings and other benefits of these regionalization features. Unless you configure all of these areas, you may not see the expected results.

The following high level checklist provides guiding questions and a general order of planning and implementation as you consider adopting the regional dial plan.

- Determine the purpose and type of application you want for these locations. For example:
 - Toll call avoidance
 - Remote office with a gateway and local 911 calling
 - Remote stations only
 - Media server locations and utilization
- Plan for and design the needed infrastructure, if it is not already in place. This includes tasks such as:
 - Determining local PSTN line and service options and requirements (e.g., is local PSTN dialing required? What about E911 service? Local toll-free calls? etc.)
 - Acquiring the appropriate SIP-enabled gateways for each site
 - Setting up or understanding the WAN configuration and codecs
 - Acquiring SIP phones for all locations
 - SIP device configuration
 - Identify how many CIC locations you plan to use and the relationships between each.
- Update the default SIP line configurations on the CIC server for the SIP connections between the CIC server and the SIP stations. CIC automatically creates line configurations for each protocol: **<Stations_TLS>**, **<Stations_UDP>**, and **<Stations_TCP>**. You can use one of these default configurations or create your own SIP line configuration.
 - In the **SIP Line Configuration** tab, on the **Access** page, give the appropriate access control to each line. This could be unrestricted (ALL) access for all stations, or it could be a specific list of IP addresses, or a range of IP addresses.
- Create SIP line configurations on the CIC server, at least one for each SIP gateway.
 - On the **SIP Line Configuration** tab, do the following:
 - On the **Access** page, give the appropriate access control to each line.
 - Also on the **Access** page, restrict access control for gateway lines, to associate gateways and lines.
 - On the **Proxy** page, set the gateway's IP address as the proxy for this line.
 - Make sure the appropriate lines are defined in the right line group, for later use in dial groups in the regional dial plan.
 - While you are setting up the configuration and customizing a live system, set the lines to be inactive until the regional dial plan configuration is complete.
- Create SIP stations for each SIP device, or use managed phone objects.
 - If creating SIP stations, possibly use a station template to create a base configuration for all SIP stations.
 - Add the IP address of each SIP device. The process of synchronizing SIP phone IP addresses with new stations in Interaction Administrator can be automated.
- Create a location entry in the Regionalization container (Interaction Administrator) for each logical group of SIP endpoints that share common codecs and dial plan entries.
 - Select the appropriate codecs (mappings) for connections between each location.
 - Select the appropriate lines and stations (line/station endpoints) to be associated with this location.
 - Determine whether or not the location will use regional dialing, and if so, determine the number of digits in the extensions for that location. Regional dialing allows dialing of short extensions within the location.
- Use the regional dial plan to specify call routing and create location-specific dial plan entries.
 - Use the default dial plan as a starting point, then duplicate and customize entries for specific locations (for example, E911 for each office, toll avoidance, and so on).
 - Add dial groups for each location, as needed.
 - Add location-based entries to the appropriate dial group.
 - Activate lines when configuration is complete.
 - Test all customized dial plan entries.

No remote PSTN connections?

Some CIC implementations may use remote SIP phones in a location that does not have a remote gateway. These stations may connect to an CIC server via a VPN or other IP connection without the need to support local PSTN calls. In this scenario, the remote employees would have:

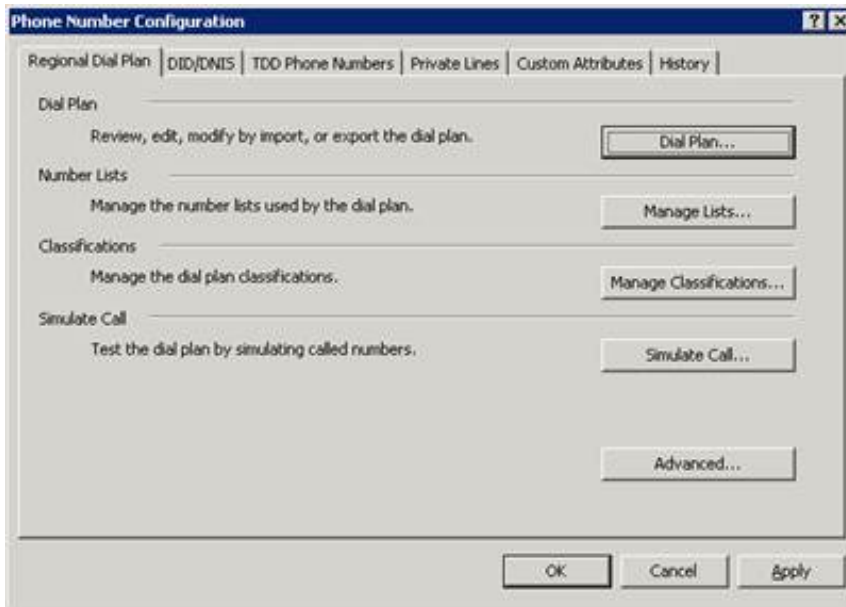
- A SIP station defined in Interaction Administrator for each remote employee.
- A SIP line defined to support the remote SIP stations.
- A location (called something like "Remote Workers") defined to include the remote SIP stations. It should also specify a low-bandwidth codec between the "Remote Workers" and themselves, and between the CIC server and the "Remote Workers" in the **Mappings** tab.
- No dial plan changes, because these stations do not have local (different) PSTN service. Local calls on these stations would be via the CIC server.

Differences between the old dial plan and the regional dial plan

The following information summarize the changes added for the regional dial plan, compared to the original or "old" dial plan, as it is now referred to in Interaction Administrator.

User interface changes

The **Regional Dial Plan** tab groups all of the common dial plan functions on a home page with buttons that launch the key components of the dial plan.



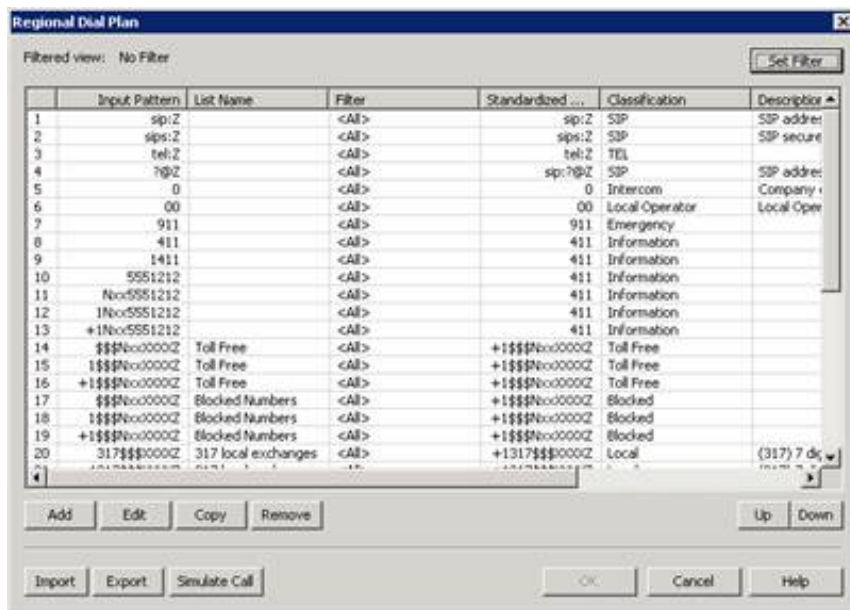
Each button launches a particular part of the dial plan building/editing process.

- **Dial Plan** - Launches the Dial Plan edit dialog box.
- **Manage Lists** - Launches the number list edit dialog box.
- **Classifications** - Launches the classification list edit dialog box.
- **Simulate Call** - Launches the call simulation dialog box.
- **Advanced** - Launches the advanced page view and generation selection dialog box.

Single-table dial plan

The old dial plan uses a two-table approach where you specify input patterns that are processed through the Input Conversion table, resulting in output patterns that are used in the Dial Plan table. This two-table approach, along with the ordinal number syntax to represent positions in the output patterns, is efficient and compact, but somewhat complex for users to grasp.

The regional dial plan uses a simpler single dial plan table that eliminates the input conversion step, and practically eliminates the need for using ordinal numbers in table. This approach may generate larger dial plan tables than before, but the reusable number lists help keep it very manageable.



Number lists

In the old dial plan, the **Add Many** button enables you to create a single combined input conversion/dial plan object that actually handles many similar kinds of phone number input. The single-table regional dial plan uses the idea of number lists to simulate this behavior. A number list would contain, for example, all of the local exchanges in an area code, and the dial plan would reuse this list for every local call within that area. In addition, consider the following items:

1. Number lists can be used by multiple dial plan entries.
2. Number lists can contain quoted or escaped literal values.
3. Like the old dial plan, lists can contain items with wildcard characters (for example, 317Nxx); but unlike the old dial plan, all wildcard characters are supported, not just the fixed-length characters (that is, ? and Z are now supported). This also means that a list may contain items of different lengths, like 123 and 1234.

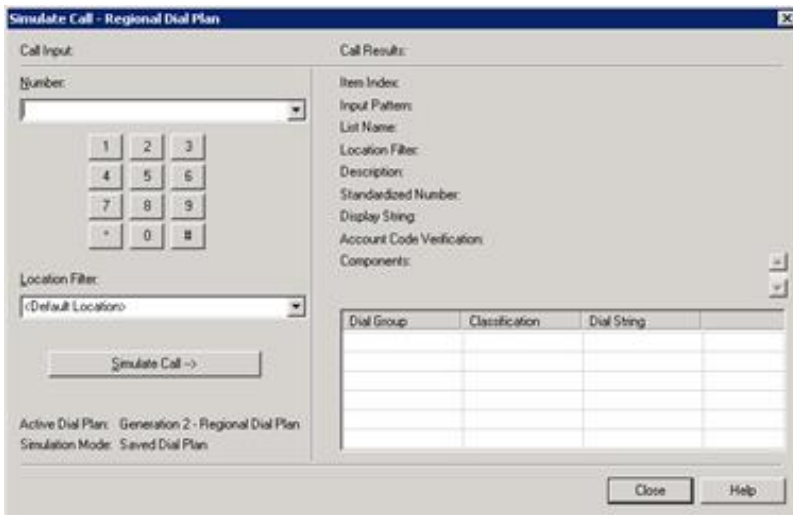
Regionalization and location filters

Heavy use of SIP devices in distributed offices, along with the use of gateways in locations with different dialing requirements has driven the need to provide location-based dial plan entries. Within the regional dial plan, you can create entries that are specific to a location. These entries can further be part of a dial group (that is, a line group) that is used to place calls for that location. Within the regional dial plan you can set a filter that displays only the dial plan entries for the selected location, enabling administrators to more easily manage dial plan configuration for each location. The locations are defined under the **Regionalization** container and referenced within the **Regional Dial Plan** edit dialog boxes. You can filter the dial plan entries by location so that only the applicable entries appear. For more information on filtering by location, see "Location filters" in [Understand the dial plan settings](#).



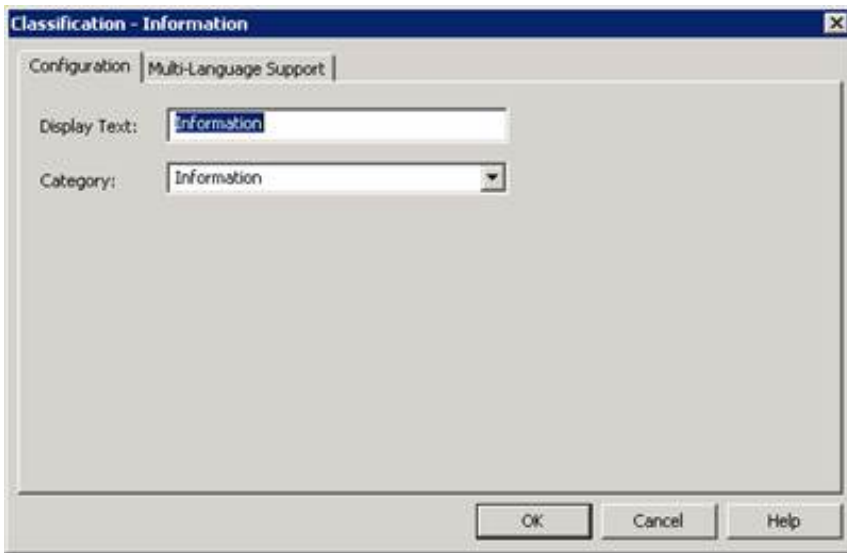
Simulate calls

This feature is similar to the **Simulate Call** page in the old dial plan, but in the regional dial plan, you can test a call simulation without actually saving and publishing the dial plan. This enables you to test dial plan entries before saving them and putting them online. The new **Simulate Call – Regional Dial Plan** page also indicates which version of dial plan you are testing (for example, Generation 2 Regional dial plan), so there is no confusion.



Classification categories

In the old dial plan, classification strings (for example, *Emergency* and *Intercom*) were visible in the dial plan table and they were literally used in some handlers to identify types of calls. This process did not support localization (in other languages) very well, so to abstract these classification strings for grouping similar classifications, and to support localizing these strings, classification categories have been added to the regional dial plan. A distinction has been made between the actual category name and the display string, which can be translated. So instead of handlers depending on the classification string name, it bases its logic on the classification category.



Genesys recommends that you not change or remove the default classifications and categories in the base dial. You can change the display text, but the default handlers and functionality rely on the default classification categories.

PureConnect uses classification categories to determine if a user is allowed to make a call by matching the resulting classification category for the input pattern with the list of classification categories configured for the user, role, workgroup, and so on, under the **Phone Number – Classifications** category on the **Access Control** tab in the **People** container.

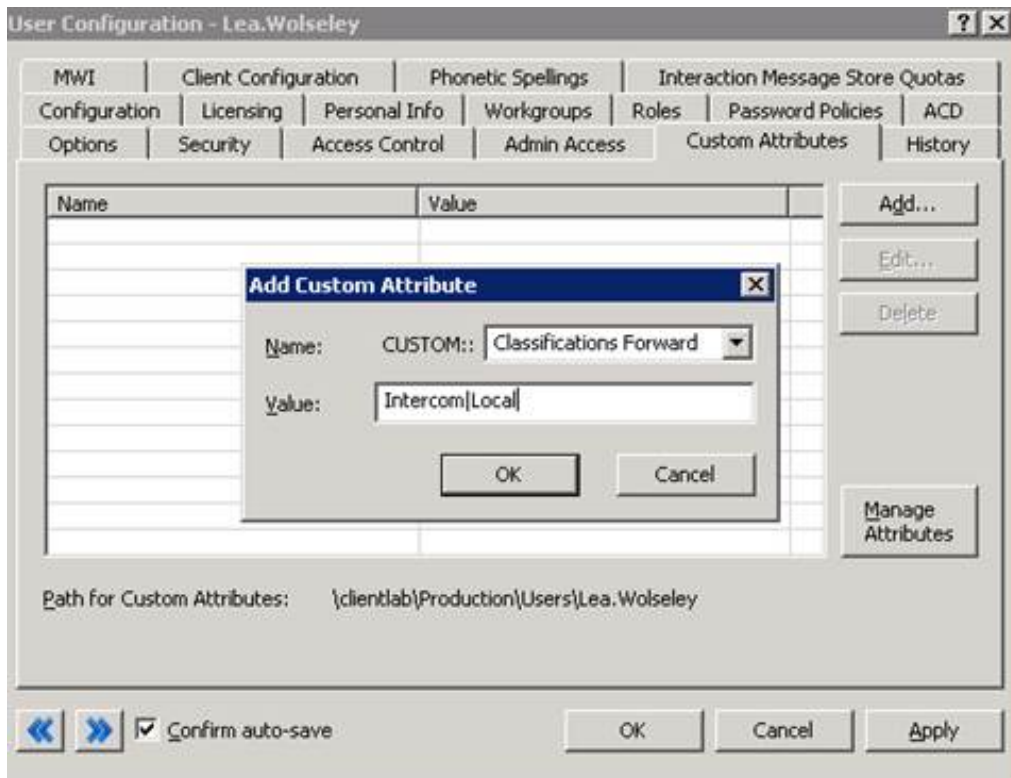
Additional classifications

In addition to the phone number classifications on the Access Control tab in Interaction Administrator, there is now support for additional classification lists which allow you to set different call rights for a user:

- **Classifications Forward** – This classification list specifies the types of calls (for example, intercom and local) that can be forwarded successfully.
- **Classifications Follow-Me** – This classification list specifies the types of calls that can be transferred to different numbers using follow-me routing.
- **Classifications TUI** – This classification list specifies the types of calls that can be forwarded from the voicemail TUI.

Users are not prevented from setting numbers that don't match the specified call types, but those numbers will result in insufficient dialing privileges when attempted and calls will roll over to voicemail.

To invoke these additional classifications, you must define custom attributes in Interaction Administrator, with the classification as the attribute name and a pipe-delimited list of the allowed classifications as the value.



The custom attributes override the default classification list. For more information about defining custom attributes, see [Custom Attributes](#) topic in [Interaction Administrator Help](#).

Handlers will automatically populate the custom attributes the first time a user has one of these dialing instances with the classifications in their regular dialing list. To limit the classifications, simply remove any unwanted classifications from the pipe delimited list in the custom attribute.

Advanced features

Two advanced features are part of the regional dial plan: user data embedded in dial plan entries and literal values embedded in input patterns.

User data

The regional dial plan enables CIC administrators to attach arbitrary user data to a phone number and have it:

- Be preserved when passing a number from one subsystem to another
- Be preserved in the dial plan processing
- Be ignored by the dial plan pattern matcher

This can be useful to handler developers who may want to embed account codes or dialing card information in a dial plan entry rather than codify it in the dial plan.

Quoted and escaped string literals

The regional dial plan enables CIC administrators to embed literal characters or strings in a dial plan input pattern, even if it contains wildcard characters. These literal characters in an input pattern can be used by handler customizations to do special processing, or provide visible indicators to CIC administrators. For example, `Oldphone:+1NxxNxxxxxxZ`, or `sip:"?"@inin.com`. Previously this would not be possible because certain characters (for example, `?` and `n`), were only treated as wildcard characters.

Performance improvements

The performance of the regional dial plan increased while the memory and network traffic footprints decreased in the following

ways:

- Moving to a single dial plan table means only one pattern matching step.
- The list-based matching has been optimized to perform a fast, set-based match on eligible lists (most are eligible) instead of looping through and expanding.
- Includes a better compression library to compress the dial plan data that is sent to CIC clients when they initialize the phone number library, and on change notifications.
- On the CIC clients, list-based dial plan entries are not automatically expanded on initialization; the matching is done in place (set-based or not). This greatly reduces the client-side memory footprint.

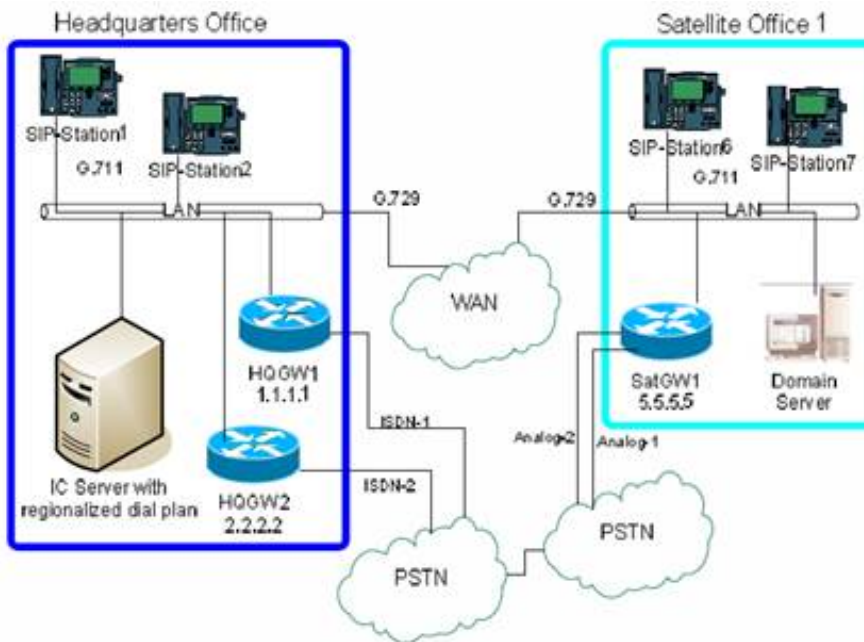
The exact performance improvements will vary depending on the dial plan complexity. In general, the more entries you have, especially list-based entries, the more pronounced the performance increase will be.

Understanding Locations

The most common use for locations

Only sites that use SIP devices, such as SIP lines, gateways, and SIP-enabled IP phones, can take full advantage of the regionalization feature benefits. However, because of the cost savings involved in VoIP, the increase in the popularity of SIP phones and gateways, and the support CIC has for hosting distributed offices, increasing numbers of CIC implementations will define locations and create regionalized dial plans. Of course, you can also have non-SIP devices in the same location as the CIC server, but they do not need to be defined in a location.

There are many possible CIC implementation scenarios that can benefit from defining locations. One common scenario that can serve as a pattern for many implementations is that of a central (for example, headquarters) office with an CIC server and one or more remote satellite offices with a gateway and a small number of SIP stations, and all offices connected by a Wide Area Network (WAN). That scenario might look similar to the following diagram:



You can imagine additional satellite offices, each with a gateway connected to the PSTN, and one or more of these offices could be in different area codes, or some could support multiple area codes as local calls. On the Headquarters side, a separate SIP line on the CIC server would be dedicated to each gateway that services a satellite office. Such a configuration would require expertise to configure the gateway interface itself, which is not covered in this document.

Locations for incoming calls

The line that a call comes in on is used to determine the location of the call. You can either use the called port or the calling IP address to determine the location of the call.

To use the called port to determine the location, you will need to have different lines configured, with each in a different location and each with a different port. The called port determines the line, and then the line determines the location.

To use the calling IP address to determine the location, you will need to have different lines configured, with each in a different location and each with a different subnet mask on the **Access** page of the **Line Configuration** dialog box in Interaction Administrator. The calling IP address determines the line, and then the line determines the location.

Representing locations

In the diagram, you can easily identify two locations with the following characteristics:

- Each location has at least one gateway.
- Each location has SIP devices (stations).
- Each location uses G.711 codec for communication within the location (e.g., station to station).

- Each location uses G.729 codec for the lower bit rate communication between endpoints in different locations over the WAN.
- Each gateway is associated with a SIP Line defined in Interaction Administrator (not shown on the diagram).
- Each SIP station is defined in Interaction Administrator with the appropriate privileges.
- At least one location has an CIC server.

The combination of these characteristics, or a variation of these characteristics, comprises a location defined in Interaction Administrator. The essential devices that must be configured in the Location container are: CIC server, lines and codecs, stations, and (optionally) media servers. In addition, there are other configuration prerequisites that must be met. As you can see, it is not a trivial exercise to define a location, so the following sections present a logical order to step through that process.

Prerequisites for creating locations

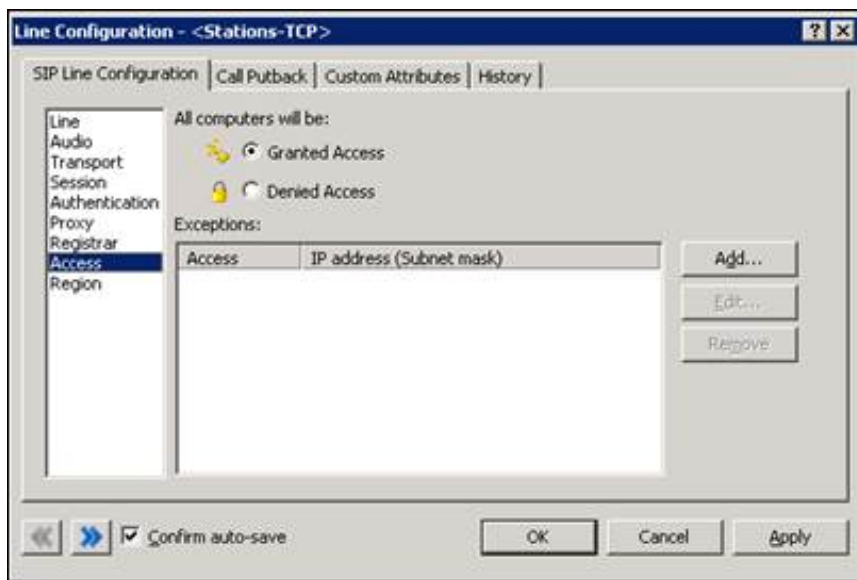
The following steps should be completed before creating a location entry and regionalized dial plan entries in Interaction Administrator.

1. Configure the gateway(s) and their connections to the PSTN (analog, ISDN, T1, E1) lines that provide your external service. You need the IP address of each gateway for SIP Line configuration.
2. Create SIP lines, if necessary, to support SIP station connections. Note that Customer Interaction Center automatically creates three SIP lines, one for each protocol. You can use these lines or create new ones:
 - <Stations-TCP>
 - <Stations-UDP>
 - <Stations-TLS>

Note:

SIP line configurations for codecs and compression rates are now defined as part of a mapping between two endpoints in a location. (This used to be part of the SIP line and SIP station configuration.)

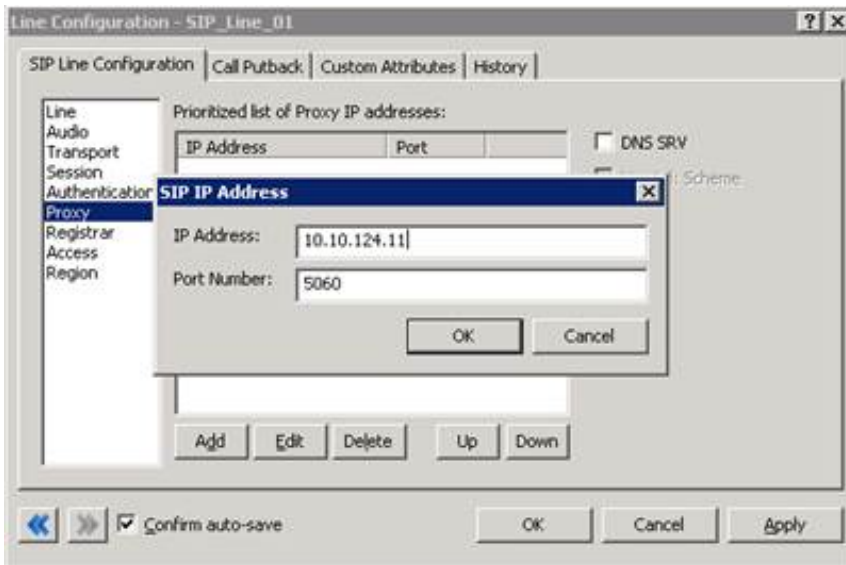
3. Update the SIP line to remove any access control restrictions so that all SIP station connections are supported. This is a simplified, minimal way to support SIP stations and gateway lines correctly. You can optionally create a range of IP addresses that represent the SIP stations.



4. Create SIP Lines to support the gateways. You will need one SIP line dedicated to each gateway.
5. Use the **Access** page to restrict access to this line except from the gateway(s) that can use it. In general, there should be at least one IP address (that is, the gateway's IP address) for each line (and one line dedicated to each gateway). In other scenarios, you may want to grant access to all IP addresses except a named list, or you may want to deny access to all IP addresses except the named addresses. In any case, this configuration page sets up the associations between the devices and lines.



- On the **SIP Line Configuration** tab, on the **Proxy** page, set the gateway's IP address as the proxy for this line.



- Create SIP Stations for each SIP phone.

You can use a station template to define the basic characteristics of all SIP phones and then create all of the SIP stations using this template.

Creating locations

Once you have the gateways, SIP lines and SIP stations configured, you are able to create locations to represent these resources.

Note:

There is always a **Default Location** defined in Interaction Administrator. You cannot delete it, but you can use it for the CIC server (for example, Headquarters) location if you want. Otherwise, you can ignore the default location, create your own named location for the CIC server, and then move everything from the **Default Location** into your primary location.

- Under the **Regionalization** container, select **Locations**.
- Right-click the right side of the **Interaction Administrator** window, and then click **New** from the resulting shortcut menu to create a new location.

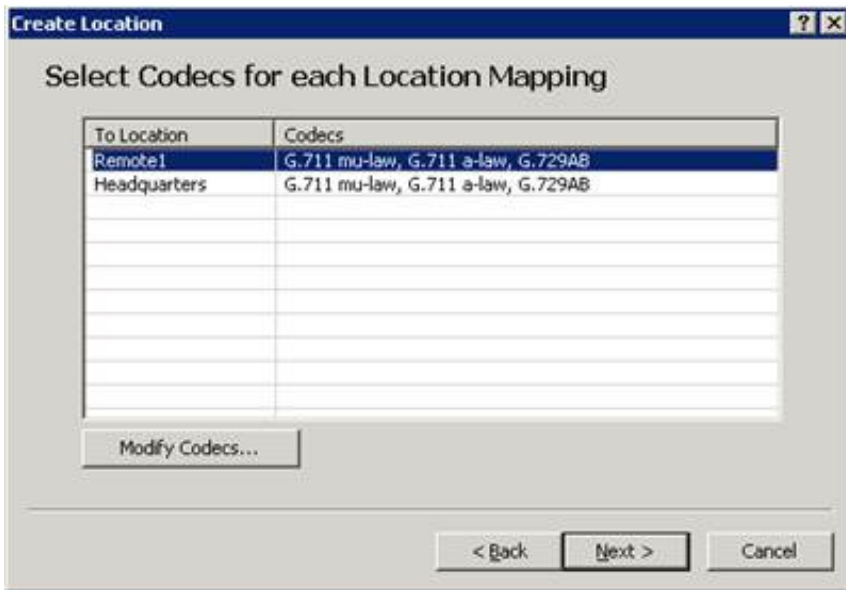
The **Create Location** dialog box appears.

3. Enter appropriate information in the following controls:
 - o **Location Name**
 - o **Description**
 - o **Time Zone**
 - o **SNTP Server** (if applicable)
 - **Use IC Server**
 - **Other**
 - o **Enable Regional Dialing** – You can enable this check box and specify a number of significant digits in the extension.

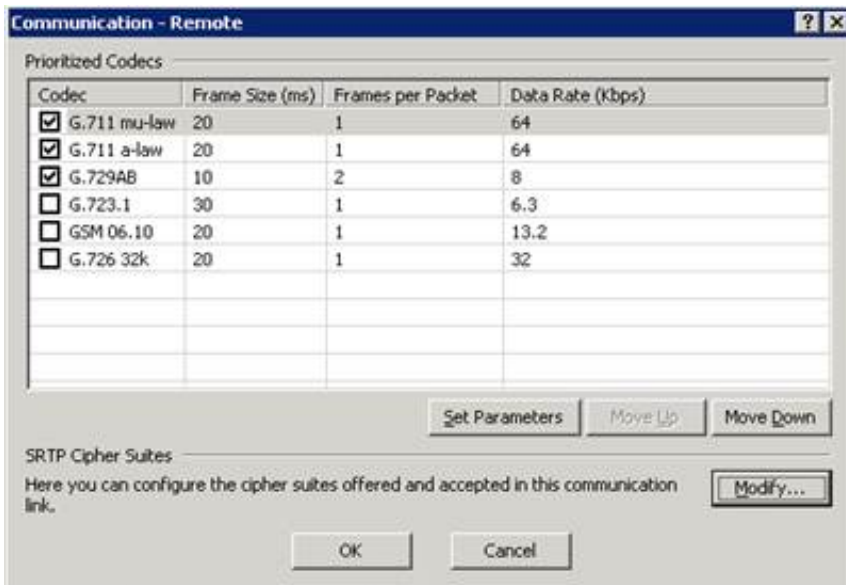
For more information on these controls, see [Location Configuration](#) in [Interaction Administrator Help](#).

4. Click **Next**.
5. In the **Select Location Communication Mappings** dialog box, choose the locations to map to the new location so that devices in those locations are able to communicate.

6. Click **Next**.
The **Select Codecs for each Location Mapping** dialog box appears.

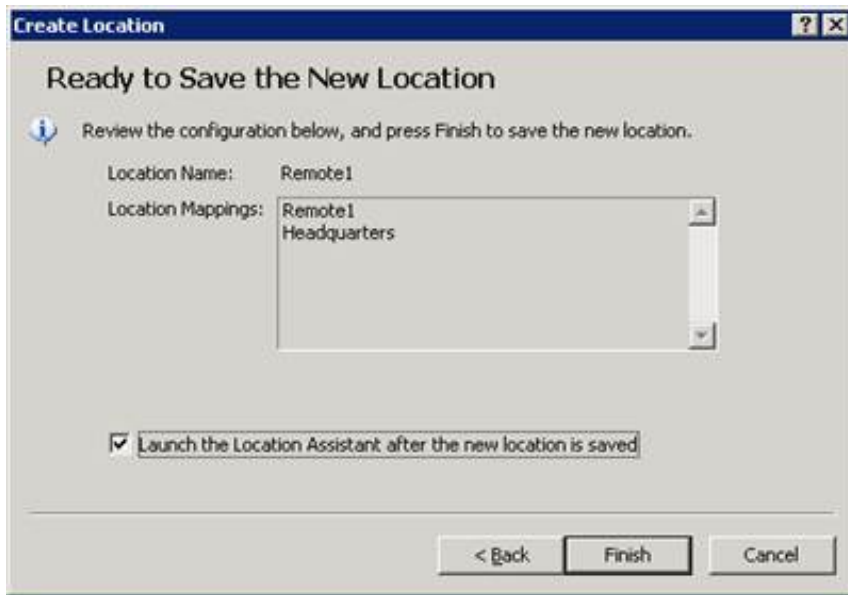


- To select the codecs supported by this server, click the **Modify Codecs** button. The **Prioritized Codecs** dialog box appears.



Since this server supports both LAN (high bit rate) connections and connects to the gateway and WAN, select both G.711 codecs. If you need to adjust any of the codec parameters, you can select **Set Parameters** to adjust the frame size and frames per packet, but this should rarely be necessary. If you need to modify the SRTP cipher suites, click **Modify**. Do not attempt to change the default settings, however, unless you are familiar with cipher suites concepts.

- Click **OK**, and then click **Next** to continue.
- In the **Ready to Save the New Location** dialog box, open the Location Assistant by enabling the **Launch the Location Assistant after the new location is saved** check box.



Note:

The Location Assistant steps you through the location configuration tasks in a linear fashion, so there is no need to manually open each related container or sub-container to complete the new location configuration. Location Assistant provides an overview and guides you through the following tasks: Add Station Support, Assign Stations, Add Gateway, Call Routing, and Select Media Server.

10. Click **Finish** to save the location.

If you chose to launch the **Location Assistant**, the dialog box appears and you are ready to configure the location's behavior

11. Click the **Help** button for details on the Location Assistant.

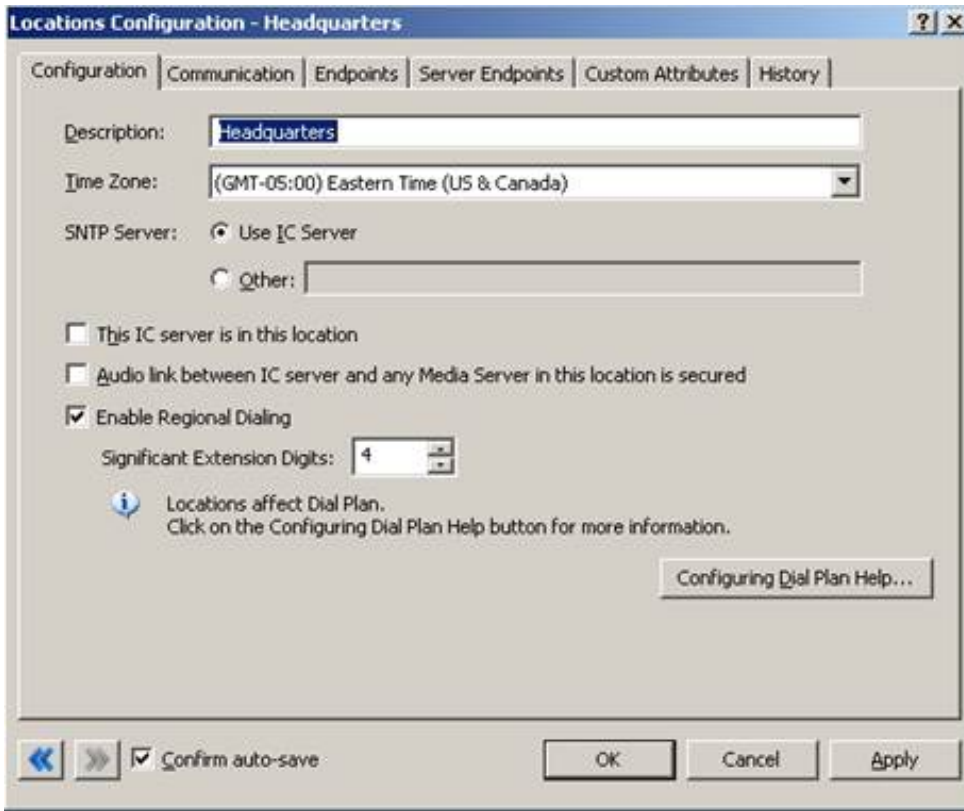
After you configure the locations, you can display a map diagram showing your location configurations. For more information, see [Using the Location Map](#).

Configuring locations

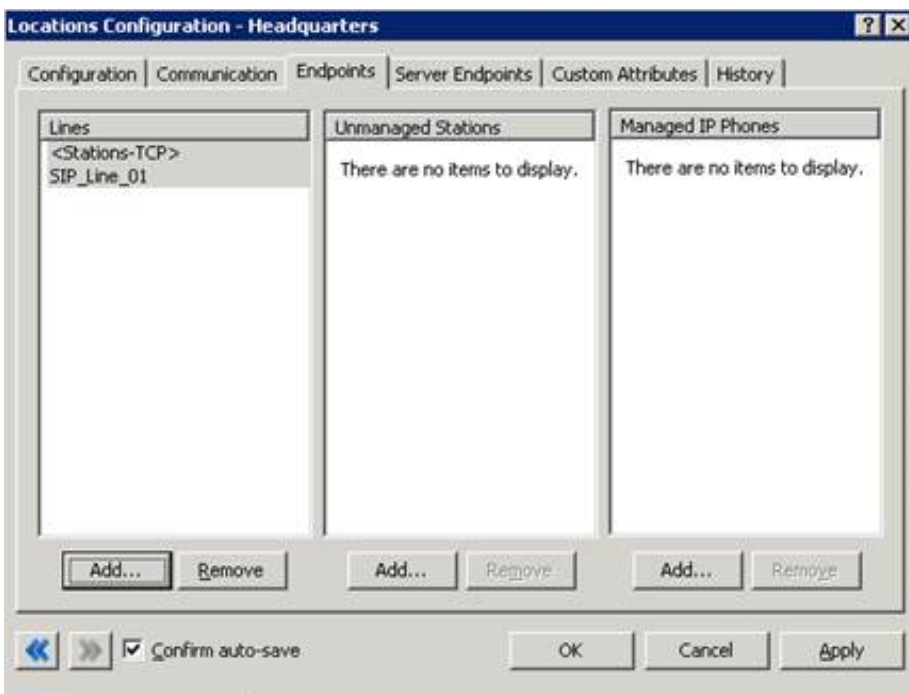
You can either use Location Assistant, which is described in the previous section, to configure your locations, or you can configure them manually. Do the following steps to manually configure locations.

1. In the **Regionalization** container, select **Locations** and double-click the location you want to configure.

The **Locations Configuration** dialog box appears.



2. If you are configuring the location for the CIC server, select the **This CIC server is in this location** check box on the **Configuration** tab.
A CIC server belongs to only one location, but you must specify codec mappings between the server and all other defined endpoints.
3. On the **Endpoints** tab, under **Lines**, click **Add** to view the list of pre-defined lines available for this location.
For a CIC server that needs to connect to SIP stations on the LAN and to remote SIP stations over the WAN, select both the SIP line that supports station-to-station connections (<Stations-TCP>, <Stations-TLS>, <Stations-UDP>, or the line you created) and the SIP line created to connect to the gateway/WAN.
4. If required by the gateway, select any additional codecs as well and use the **Up** and **Down** buttons to set the priority order of codecs usage, usually from fastest to slowest.
5. Click **OK** to complete the codec selection.



6. Under **Unmanaged Stations**, click the **Add** button to select the stations supported in this location.
The selected stations connect to the CIC server through the line(s) listed in this tab.
7. For Interaction Media Servers, click the **Server Endpoints** tab, and then click the **Add Media Server** button to specify the Interaction Media Servers to include in the location.



8. On the **Configuration** tab, click the **Configuring Dial Plan Help** if you want to launch *Interaction Administrator Help*.
9. Click **OK** to save the CIC server location configuration.
10. Create another location for the satellite office and assign an appropriate name.
The name you assign should make identification of the physical location simple, such as *Satellite Office 1*.
11. On the **Configuration** tab, enter a description for this location.

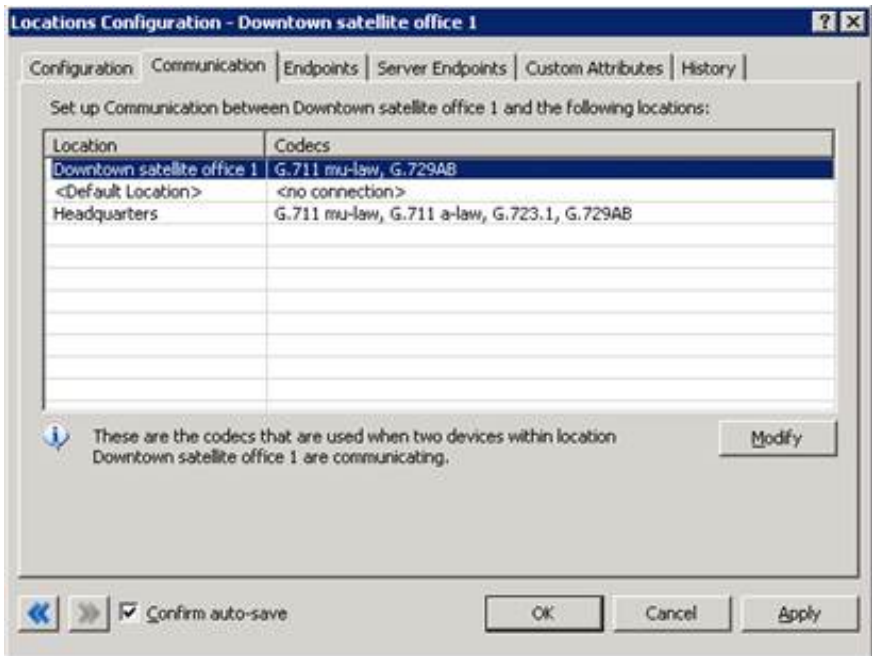
Important!

Do not enable the **This IC server is in this location** check box.

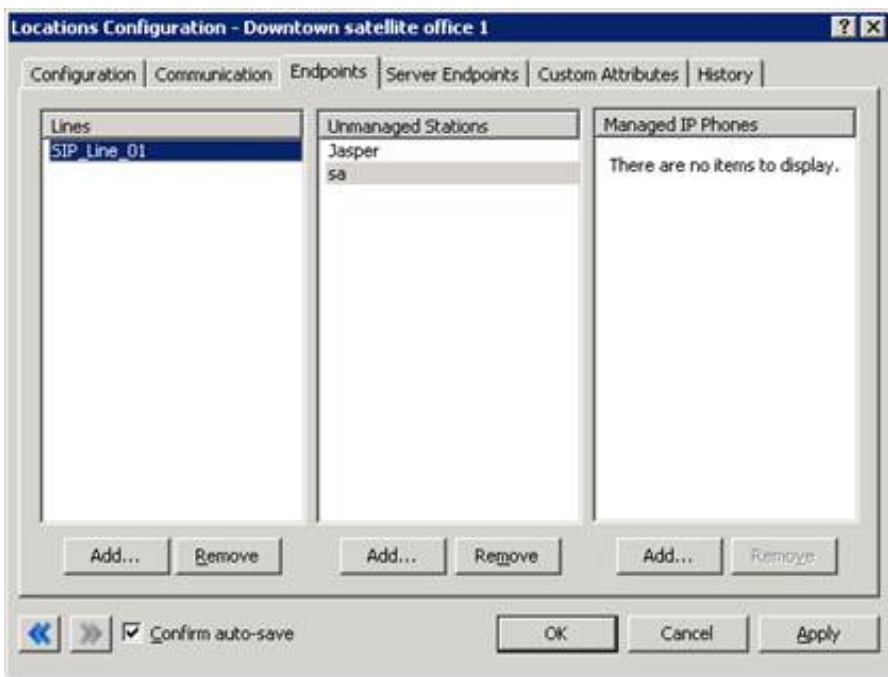


12. If required, enable the **Enable Regional Dialing** check box and specify the **Significant Extension Digits**.
For more information, see [Location Configuration](#) in *Interaction Administrator Help*.
13. In the **Communications** tab, select the **Modify** button to specify the codecs supported between this location and itself, and between this location and the other locations.

Within the satellite office where communication is over a LAN, the preferred codec is the higher bit rate G.711. From Satellite Office 1 to Headquarters (over the WAN), it uses the slower G.729 codec.



- On the **Endpoints** tab, click **Add** under the **Lines** area to select the predefined lines available for this location. You cannot select the line used in the Headquarters location. In this case, select a line designated for SIP stations, with unrestricted access.



- Click **Add** under **Unmanaged Stations** to select the stations supported in this location. The selected stations are part of a station group that uses this designated SIP line.
- Click **OK** to save the location configuration.

Note:

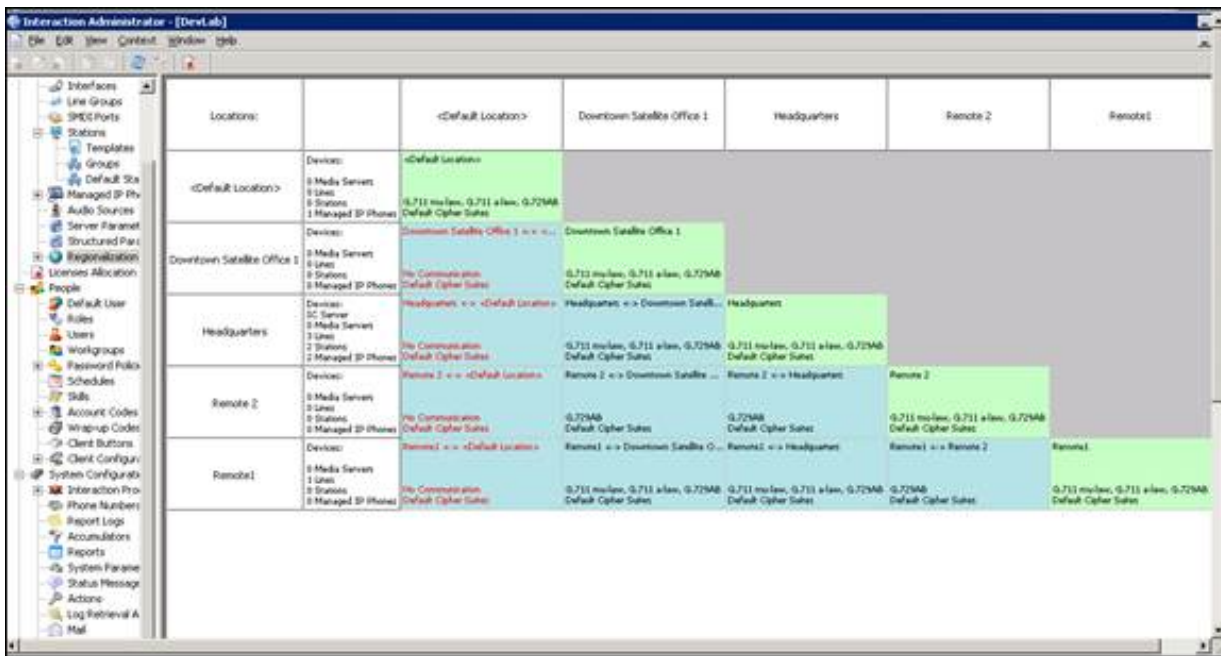
Once the location configurations are complete, you must update the regional dial plan to make use of these locations, if the locations require different local dialing patterns.

Using the Location Map

After you add and configure your locations, click on the **Regionalization** container in Interaction Administrator to view a diagram that displays the following items:

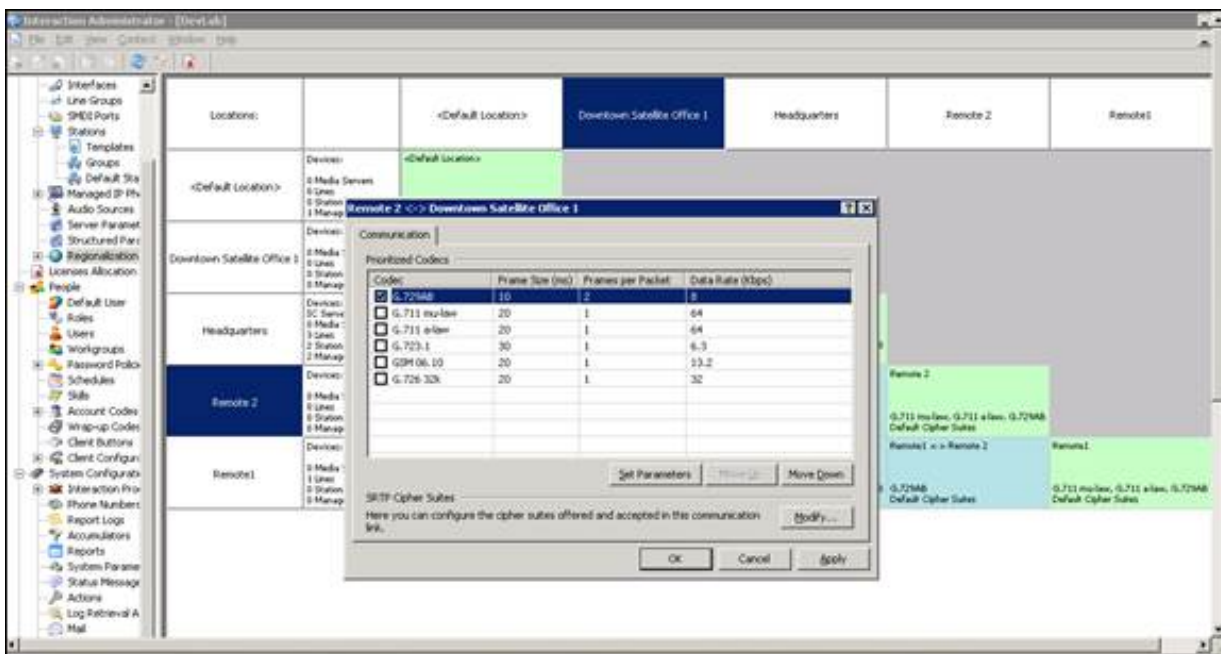
- List of locations, along the left side and also across the top of the map
- The number of devices (media servers, lines, stations, and managed IP phones) configured for each location
- At the intersection of two locations, information about the way communication between the sites is configured:
- The status of communications
- The codecs used for communication in order of priority
- The cipher suites used for encrypting SIP messages when using TLS on the SIP lines

This map is useful for viewing and troubleshooting the overall configuration information and comparing the configurations at the individual locations. If there is no communication between two locations, the intersection of those locations displays a red **No Communication** message.

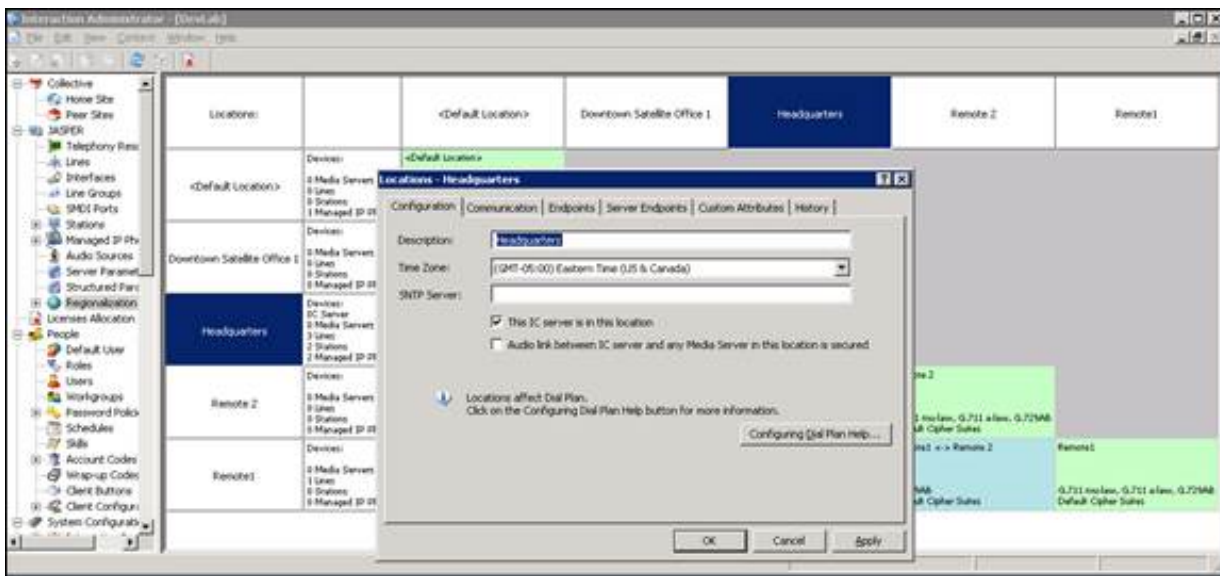


In the location map, the intersection of each location with itself appears in one color, while the intersection of each pair of distinct locations appears in another color.

You can update the codecs, codec parameters, and cipher suites used between two locations by right-clicking the intersection of those locations and clicking **Properties** from the resulting shortcut menu.



You can also edit all the information in a location's configuration by double-clicking the intersection of that location with itself.



Understand and update the Regional Dial Plan

If SIP stations in your locations need to place local calls to an exchange or area code not included in the default dial plan, such as using gateways to make local calls, you must update the regional dial plan to reference these locations to complete the regionalization.

For more information, see the following:

- [Understand the dial plan settings](#)
- [Understand the dial plan process](#)
- [Update the dial plan entries](#)
- [Update the local 911 entry](#)
- [Convert to the regional dial plan](#)
- [Remote station connection calls](#)
- [Forward and follow-me region selection](#)
- [Server parameter for internal, regional calls](#)

Understand the dial plan settings

CIC creates the initial dial plan settings when a system administrator runs Setup Assistant on the server and chooses to create a dial plan. Setup Assistant includes a wizard that allows the administrator to specify a list of local area codes and exchanges. Setup Assistant then uses that information to create the appropriate entries in the dial plan, along with some default, generic entries. You can see the local and default entries when you open the phone numbers configuration in Interaction Administrator.

If the system administrator chose not to create or import a dial plan when running Setup Assistant, the dial plan will be blank.

For more information on Setup Assistant, see [IC Setup Assistant Help](#).

Note:

For international number plans, it is recommended that you import your own dial plan or create your dial plan in Interaction Administrator.

Default dial plan entries

The following default entries in the **Phone Number Configuration** container allow Customer Interaction Center to format and classify certain types of calls without Administrator modification or input:

Description	Entry	Description	Entry
SIP (explicit)	sip:Z	SIP (secure)	sips:Z
SIP address (@-based)	?@Z	SIP (with IP address or phone number)	tel:Z
Company Operator	0	Local Telephone Company Operator	00
911	911	411 or Information	411 1411 5551212 Nxx5551212 1Nxx5551212 +1Nxx5551212
Toll Free Numbers	\$\$\$NxxXXXXZ 1\$\$\$NxxXXXXZ +1\$\$\$NxxXXXXZ	Blocked Numbers	\$\$\$NxxXXXXZ 1\$\$\$NxxXXXXZ +1\$\$\$NxxXXXXZ
Long Distance	NxxNxxXXXXZ 1NxxNxxXXXXZ +1NxxNxxXXXXZ	Single digit extensions	X
Double digit extensions	XX	Three digit extensions	XXX
Four digit extensions	XXXX	Five digit extensions	XXXXX
Six digit extensions	XXXXXX	N-digit extensions	/Z
International Numbers	011+Z 011Z +Z	Other numbers	Z

Rules for standardized numbers

The dial plan configuration packaged with Customer Interaction Center illustrates the preferred way to implement standardized number formats. If you want the phone numbers to be completely international and portable to any location in the world, keep these characteristics in your standardized number format:

- Numbers are completely specified. Entries should contain a country code preceded by a plus sign (+), an area/city code (if applicable), a local number, and an optional extension.
- Exceptions are:
 - The number is purely an extension, like /131.
 - The number is a specially-recognized number in a country, such as 911.
- Numbers are location-independent and must contain address information rather than dialing information. For example, an international number should not be standardized to include the 011 International Direct Dialing (IDD) prefix, because other countries and numbering plans have different IDD prefixes.

Wildcard characters

Wildcard characters are variables used to represent a range of numbers in phone number patterns. Patterns can consist of all digits, all wildcard characters, some non-dialing characters (such as + and /), or any combination.

These digits and characters...	Are represented by the wildcard character...
0 through 9	X (or x) represents a single digit character in that range.
2 through 9	N (or n) represents a single digit character in that range.
Any characters after the 7, 10, or 11 required telephone company digits	Z represents zero or more trailing characters of any value. Using Z allows the dialer to enter extra characters after the required digits without interfering with the dial string. This wildcard character must be the last character of the pattern; it is an error for it to appear anywhere else (which means there can be only one occurrence of this character in each number).
0 through 9, #, *, '	? represents zero or more of these characters. Note that /, @, and + are not included.
\$	\$ represents a substitution character used in defining multiple exchanges from a list.

Special characters

These characters are not actually dialed, but are preserved as part of the stored phone number:

- + is a prefix to introduce a country code.
- / is a prefix to introduce an extension for direction extension dialing.

Ordinal numbers

Ordinals identify the position or order of a number in a sequence, such as 1st, 2nd, 3^d, etc. Their positions are displayed in braces such as {1}, {2}, {3}, etc., and can be combined with dialable digits.

The following table indicates input and output patterns for a local phone number, 872-3000:

Local Number Input Pattern	Output Pattern (Ordinal)
8723000	+1317{1}{2}{3}{4}{5}{6}{7}{8}
317NxxxxxZ	+1317{4}{5}{6}{7}{8}{9}{10}{11}
317NxxxxxZ	+1317{5}{6}{7}{8}{9}{10}{11}

Dial groups

A dial group is a group of lines or channels that are defined in the **Line Groups** container and that CIC uses for outbound calls. The lines included in this group should have a direction of **Outbound** or **Both**, rather than **Inbound**, to avoid line contention when dialing.

You can assign dial groups to patterns in the dial plan to direct certain kinds of outbound calls to specific lines. For example, outbound international calls might be directed to one dial group, while local outbound calls are directed to another dial group.

You could also create a SIP line group and assign it to the default sip:z entry in the dial plan so that all SIP calls will use the SIP line group.

Location filters

The location filter assigned to a dial plan object determines the locations to which that object applies.

This filter...	Means that...
<All>	The entry is applicable to all locations.
<Skip this item>	The entry is not considered for live dial plan processing. This provides a convenient way to deactivate an entry for testing or other purposes.
<Many Locations...>	The entry applies to multiple locations, which you can select.
<Default Location>	The entry applies to all entries that are not already assigned to other locations. It also defines the SIP Station and SIP Line codec used when no locations are defined.
<Location Name>	The entry applies to a single location, which you select.

Understand the dial plan process

When a user dials a number, Customer Interaction Center first matches the number with one of the defined input patterns in the dial plan. Once a match is made, Customer Interaction Center converts the dialed number to a standardized format and processes the call based on the details identified for that pattern (dial string, display string, classification, dial group).

	Input Pattern	List Name	Filter	Standardized ...	Classification	Description
11	Noc5551212		<All>		411	Information
12	1Noc5551212		<All>		411	Information
13	+1Noc5551212		<All>		411	Information
14	\$\$\$Noc0000Z	Toll Free	<All>	+1\$\$\$Noc0000Z	Toll Free	
15	1\$\$\$Noc0000Z	Toll Free	<All>	+1\$\$\$Noc0000Z	Toll Free	
16	+1\$\$\$Noc0000Z	Toll Free	<All>	+1\$\$\$Noc0000Z	Toll Free	
17	\$\$\$Noc0000Z	Blocked Numbers	<All>	+1\$\$\$Noc0000Z	Blocked	
18	1\$\$\$Noc0000Z	Blocked Numbers	<All>	+1\$\$\$Noc0000Z	Blocked	
19	+1\$\$\$Noc0000Z	Blocked Numbers	<All>	+1\$\$\$Noc0000Z	Blocked	
20	317\$\$\$0000Z	317 local exchanges	<All>	+1317\$\$\$0000Z	Local	(317) 7 di
21	1317\$\$\$0000Z	317 local exchanges	<All>	+1317\$\$\$0000Z	Local	(317) 7 di
22	+1317\$\$\$0000Z	317 local exchanges	<All>	+1317\$\$\$0000Z	Local	(317) 7 di
23	NocNoc0000Z		<All>	+1NocNoc0000Z	Long Distance	
24	1NocNoc0000Z		<All>	+1NocNoc0000Z	Long Distance	
25	+1NocNoc0000Z		<All>	+1NocNoc0000Z	Long Distance	
26	\$\$\$0000Z	317 local exchanges	<All>	+1317\$\$\$0000Z	Local	(317) 7 di
27	X		<All>	/X	Intercom	1 digit ext
28	X0		<All>	/00	Intercom	2 digit ext
29	X00		<All>	/000	Intercom	3 digit ext
30	X000		<All>	/0000	Intercom	4 digit ext

If you double-click the 317\$\$\$XXXXZ entry in the dial plan, for example, or select the entry and click **Edit**, you can see the details for that input pattern.

Regional Dial Plan - Edit Pattern

Input Pattern: 317\$\$\$0000Z Standardized Number: +1317\$\$\$0000Z

Location Filter: <All> Default Dial String: \$\$\$0000Z

List Name: 317 local exchanges Display String: (317) \$\$\$-XXXX Z

Classification: Local Edit Base: (317) \$\$\$-XXXX Z

Account Code Verification Components: ReportingCode1:317
ReportingCode2:\$\$\$
ReportingCode3:XXXX

Description: (317) 7 digit

Dial Group	Filter	Classification	Dial String

Buttons: Add Group, Edit, Remove, Up, Down, <<, >>, OK, Cancel, Help

Update the dial plan entries

You can add new input patterns or make edits to existing ones from the Regional dial plan table or by using Setup Assistant.

New area codes

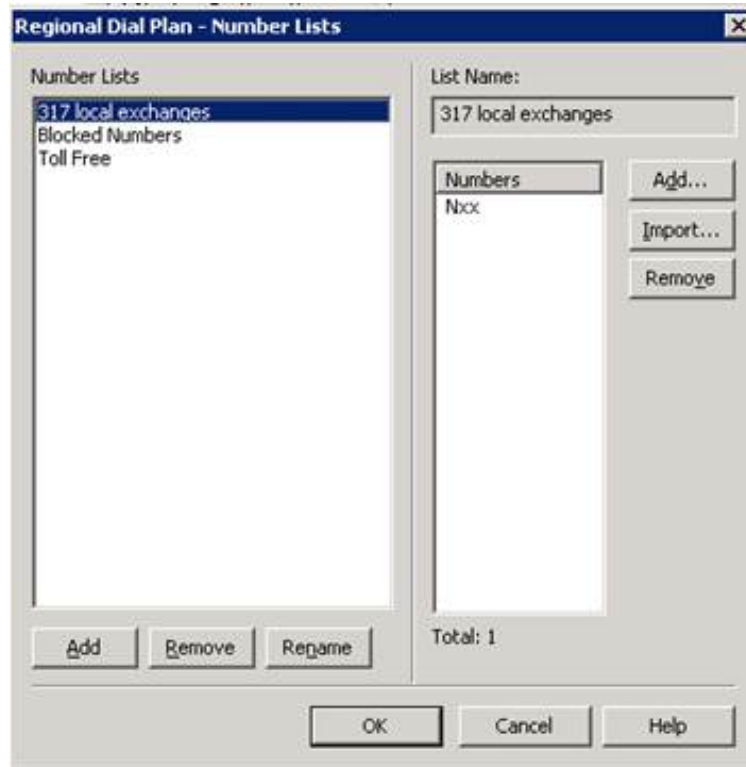
If you choose to add a new area code directly through the dial plan page, you will need to know all of the specifics of your entry. For example, you will need to provide the correct input pattern, the standardized number, the default dial string, display string, classification, and any lists used.

If you plan to add a new area code by rerunning Setup Assistant, Setup Assistant configures all of this information for you. All you need to supply is the area codes and the local exchanges.

New exchanges

If you only need to add new exchanges for existing area codes, click **Manage Lists** on the **Regional dial plan** tab of the **Phone Number Configuration** dialog box.

You can add each exchange individually, or if all numbers within an exchange will be local, then you can also use wildcard characters to indicate the exchange. For example, if all numbers within the 317 area code will be local, you can add Nxxx to the list of entry numbers.



Emergency dialing

You will need to make dial plan changes to ensure that emergency calls work in each location. There are two methods to ensure that emergency calls are routed appropriately:

- Create a new dial plan entry for 911 (the North American emergency number) and assign it to the specific location.
- Use a single emergency number entry (911 in North America) and assign the dial group filters for each location.

For more information, see [Update the local 911 entry](#).

Filtering the dial plan

Click **Set Filter** at the top of the screen to select the dial plan objects to display based on a specific location.

Ordering the dial plan entries

The order in which your objects appear is important as it determines which object will be used for the call because Customer Interaction Center stops after it finds the first matching pattern. To arrange your dial plan objects in the appropriate order, use the **Up** and **Down** buttons.

Importing and exporting the dial plan

The **Import** and **Export** buttons allow you to import or export the dial plan files (*.i3dplan).

You should export your dial plan to a file, for example, to make a backup copy of it before you make changes.

If you need to add a new area code to an existing dial plan, you could export the current dial plan, use Setup Assistant to add the new area code, test the new objects using the Simulate Call feature, and then import the previous dial plan and merge it with the new entries.

Note:

You might need to manually move the new dial plan objects higher up in the dial plan as they are added at the bottom of the dial plan by default. For more information, see "Ordering the dial plan entries".

Update the local 911 entry

One of the first dial plan changes is to ensure emergency (E911) calls work in each Location. You can make these changes in one of two ways:

- Create location-specific dial plan entries in the top-level dial plan table.
- Keep one dial plan entry and modify it to use location specific dial groups to direct calls over certain lines.

Note:

CIC offers the following methods for making emergency calls:

- Station location fields in Interaction Administrator and configuring dial plans to ensure that emergency calls from managed stations use a local gateway for connection to a Public Safety Answering Point (PSAP)
- E911, introduced in CIC 2017 R1, which requires you to acquire the services of a third-party E911 service provider that routes the emergency call to the appropriate PSAP based on the identifying IP and Media Access Control (MAC) address of the station and previously-provided Automatic Location Information (ALI) data.

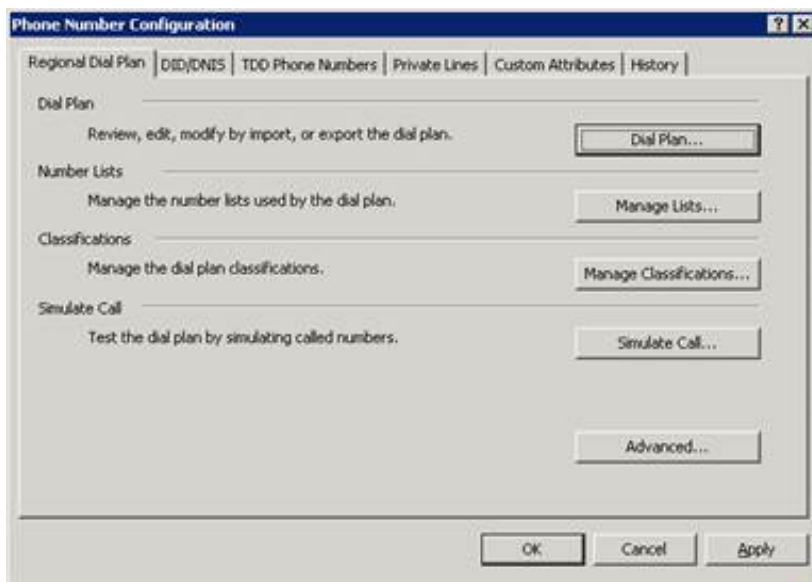
For more information about the first emergency call method, see the following:

- [Create a new dial plan entry](#)
- [Create a new dial group entry](#)

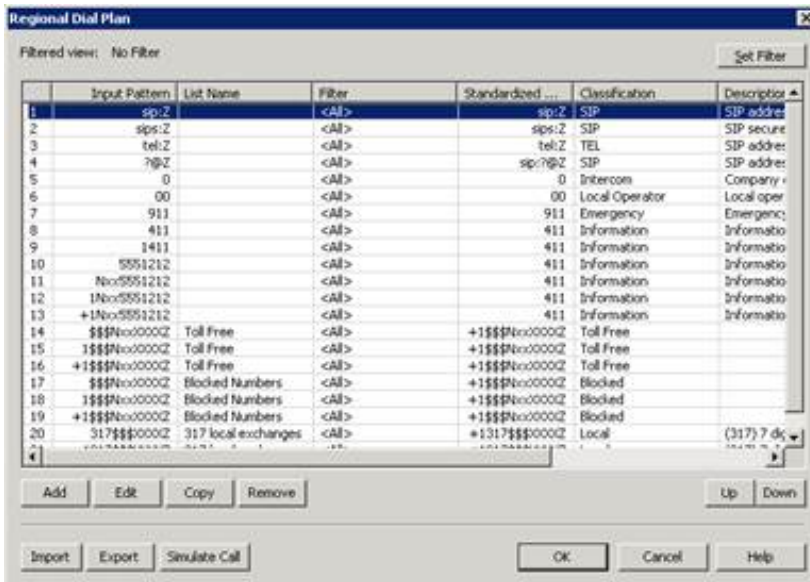
For more information about the E911 method, see [E911 Technical Reference](#) in the [PureConnect Documentation Library](#).

Create a new dial plan entry

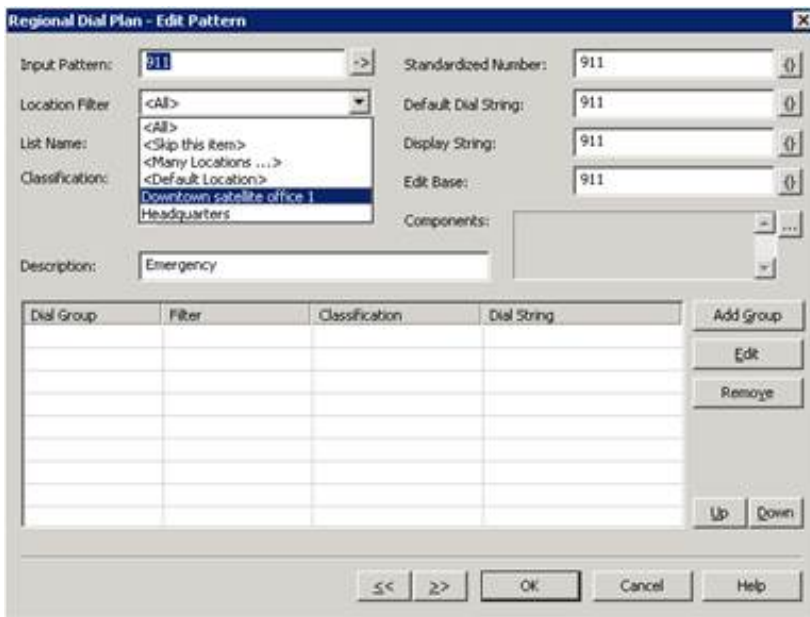
1. In the **Phone Number Configuration** container, select the **Regional Dial Plan** tab.



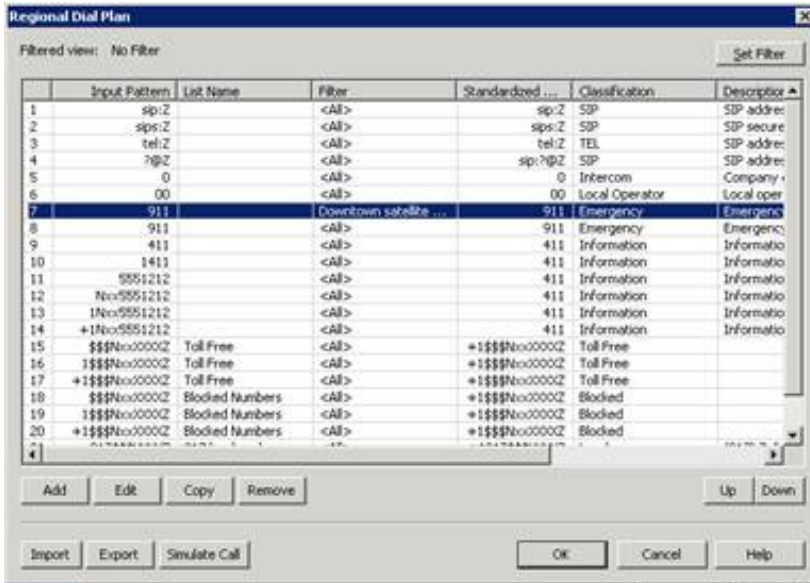
2. Click the **Dial Plan** button to display the **Regional Dial Plan** table.
By default, you will see all dial plan entries for all locations.



3. Create a customized 911 Emergency number for the Satellite Office, select the **Input Pattern** row for 911 (index item 7) and click **Copy**.



4. In the **Edit Pattern** dialog box, select **Downtown Satellite Office 1** from the **Location Filter** list.
5. Add a description of the **Downtown Satellite Office 1** entry for ease of identification when later viewing the master **Regional Dial Plan** table.
6. Click **OK** when finished.
A new dial plan entry for **911** specific to **Satellite Office 1** appears below the default **911** entry in the **Regional Dial Plan** table.
7. Select the new **911** entry (currently index item 8) and click the **Up** button to move it up one row, to row 7.

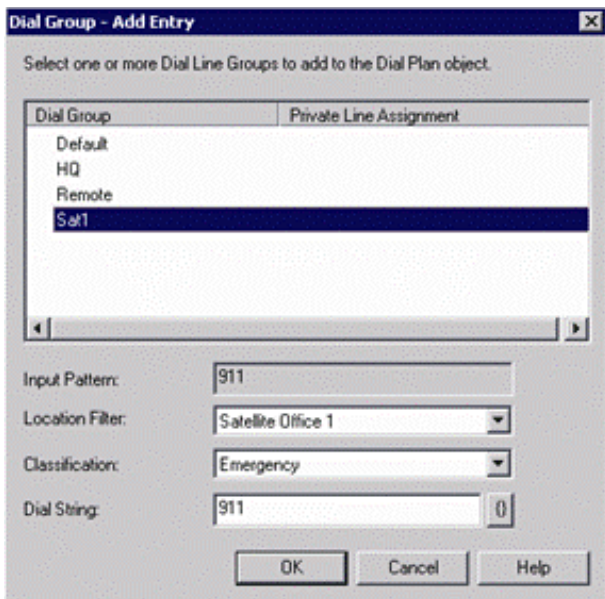


Now, CIC evaluates and processes 911 calls from Satellite Office 1 using row 7 instead of the general 911 dial plan entry that applies to all other locations on row 8.

Create a new dial group entry

Another way to enable a location to use an existing dial plan entry is to add a dial group filter for each location within each dial plan entry that needs it. In this case, there will be only one dial plan entry for 911, for example, but within that entry, a list of dial groups will be defined to match calls from each location. When there is a match, CIC will dial on the appropriate lines. Dial groups are simply line groups that are enabled to be selected in the dial plan.

1. Open the default regional dial plan and double-click the 911 entry (index item 7).
The **Edit Pattern** dialog box for that entry appears.
2. Click the **Add Group** button to display the **Dial Group – Add Entry** dialog box.



3. In the **Dial Group** column, select the dial group (SIP line) that you want to designate to server the remote office.
4. In the **Location Filter** list box, select **Satellite Office 1**.
5. Click **OK**.
6. Repeat these steps to add another dial group for the Headquarters location.
If **Satellite Office 1** and **Headquarters** are the only defined locations, you can select the **<ALL>** location for the Headquarters dial group, as the Satellite Office 1 location already has its own dial group for calling 911.
7. Click **OK**.

The 911 pattern now shows the selected dial group, and any 911 calls placed from **Satellite Office 1** will match this entry and use the specified dial group.

Dial Group	Filter	Classification	Dial String
Sat1	Downtown satellit...	Emergency	911

8. Update the **Description** field to reflect changes with the dial group and click **OK**.

Convert to the regional dial plan

All existing sites that upgrade to releases with regional dial plan features can continue to use their original generation 1 dial plan without modification. However, new sites, or existing sites that want to deploy SIP devices in various locations should use the regional dial plan.

An automated migration tool does not exist to migrate an old dial plan table to the new single-table regional dial plan format. You must manually move the desired dial plan entries from one to the other, taking into consideration the impact of using locations as you go. Because only one dial plan is active at one time, you can easily work on the migration without disrupting service while using the original dial plan.

CIC Regionalization and Dial Plan Technical Reference

Remote station connection calls

Remote station connection calls use a region context if placed from the server. Connection calls, which are calls used to connect to remote numbers for remote users, can occur for inbound calls.

For inbound calls, the region of the line the call originated on is used for placing the connection call. CIC uses the dial plan associated with the region of the line receiving the inbound call.

For outbound calls, there is usually no line associated. The outbound call process uses the location of the user. If the server parameter **Use Outbound Base Call For Connection** is set to **0** (default value), the CIC server uses its location dial plan to make the connection call to the remote station. If the server parameter has a value of **Y, Yes, T, True, or 1**, the CIC server uses the location plan for the user to make the call.

Copyright and trademark

Forward and follow-me region selection

When a user's status is set to a Forward or Follow-Me status, outbound calls use the region of the line from which the call is placed. Forward and Follow-Me numbers are standardized when the values are entered into the CIC client. Therefore, the standardized number is passed to the dial plan of the region of the inbound call's line when the call is placed.

Server parameter for internal, regional calls

The **Keep Internal Regional Calls On Server** CIC server parameter allows control of calls that can be completed as intercom calls rather than over *tromboning*; having calls go out of the internal network and come back in through the PSTN.

The server parameter supports the following values:

Value	Description
Enable (or "E")	This value enables the keeping of internal regional calls on the server. Internal regional calls do not go out to the PSTN and come back in. This is the default value. Any value other than Disable or Same Region Only is interpreted as Enable .
Disable (or "D")	This value disables the keeping of internal regional calls on the server. Intercom calls go out to the PSTN and come back in.
Same Region Only (or "S")	This value keeps calls on the server only if they are made within the same region.

What is a dial plan?

Outgoing calls placed through Customer Interaction Center can originate from a number of places. Because phone numbers can look very different—some with area codes, some with letters, some with country codes, and so on—Customer Interaction Center uses a pattern matching process to format and dial phone numbers in a consistent manner, regardless of how they were dialed by the user.

The dial plan defines the input patterns that Customer Interaction Center uses to change phone numbers into a standardized format. It also defines the dialing actions to take for each pattern, as well as the locations and classification for each pattern.

Customer Interaction Center uses the information in the dial plan to perform the following tasks:

- Format the phone number into a standard package.
- Determine the call classification (local, long distance, toll, etc.).
- Determine if the user is allowed to make that type of call.
- Send the appropriate numbers (7, 10, or 11 digits).
- Determine which line or lines to use for the call.
- Determine what to display on the CIC client.
- Parse and store segments of the telephone number for statistical reports.

What is regionalization?

In most previous releases, the dial plan on an CIC server was specific to a single site and Central Office (CO) or PBX. In a configuration where a central CIC server hosts one or more remote offices, significant handler modifications were required, and every line and station in remote offices had to use the same dial plan. Sites with remote SIP devices had to configure the codecs for each device individually. CIC system configuration was independent of the phone configuration, and there was no way for various phones to use a specific (unique) gateway when dialing the same phone number.

Now, however, CIC administrators can use regionalization features to create "Locations" comprised of (SIP) lines and stations and the codecs that enable them to communicate. These locations are normally used in the new single-table (i.e., simpler) dial plan configuration to support unique and localized dial patterns for remote sites. This concept of region, or location, enables administrators to specify and control the resources (for example, lines, stations, gateways, and servers), and codecs for all of the connections on a remote or local CIC system. It makes it easier and more flexible to configure multi-location installations, and it centralizes control of codecs and call routing. The new single-table dial plan can apply to all lines and line groups hosted by an CIC server and it can route remote SIP station calls to local gateways.

Initially, this location configuration applies only to SIP lines, stations, and Media Servers, but eventually it may apply to other resources as well. Existing sites that upgrade can choose to continue to use their original dial plan, since migration is not required unless you want to take advantage of the regionalization features for SIP lines and stations.

Change Log

The following tables lists the changes to the *CIC Regionalization and Dial Plan Technical Reference* since its initial release.

Date	Changes
30-August-2011	Updated for Interaction Center 4.0.
13-September-2014	<ul style="list-style-type: none">• Updated documentation to reflect changes required in the transition from version 4.0 SU# to CIC 2015 R1, such as updates to product version numbers, system requirements, installation procedures, references to Interactive Intelligence Product Information site URLs, and copyright and trademark information.• Updated for CIC 2015 R1.
25-August-2015	Updated for rebranding and client changes and cleaned up inconsistent capitalization.
04-October-2016	<ul style="list-style-type: none">• Updated Copyright and trademark information page• OT-173: Added content to Update the local 911 entry for the new E911 feature for CIC that enables usage of a third-party E911 service provider.• Implemented various edits and modifications to make the document and its content align with current departmental standards.• Updated content for remote stations in Remote station connection calls.
08-December-2017	Rebranded from Interactive Intelligence to Genesys.
12-June-2019	Reorganized the content only, which included combining some topics and deleting others that just had an introductory sentence such as, "In this section...".
19-May-2020	Updated value options for Use Outbound Base Call for Connection parameter.